

oakheart

£1,100 Per Month

Per Month
Meeanee Mews, Colchester

In 2016, this former Officers Mess was converted into a range of contemporary-style apartments. Within walking distance to Colchester Town Centre and the Town Train Station, the property is well placed. Providing an abundance of local amenities nearby.

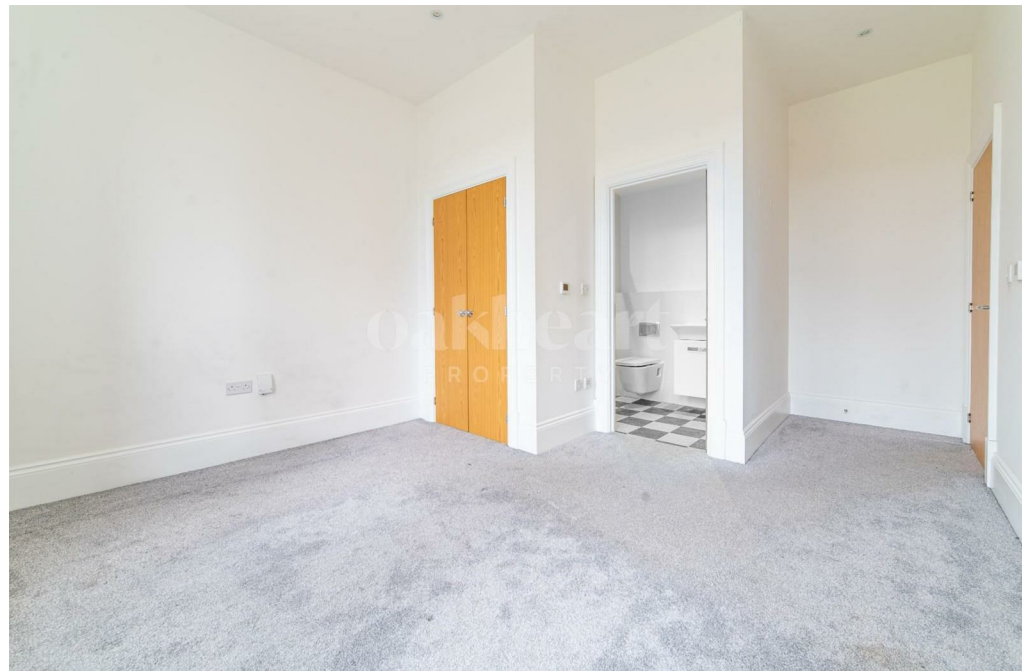
The apartment opens to a spacious entrance hall with plenty of storage cupboards, this leads to a beautiful

open plan living area. The living area comprises of a modern kitchen with integrated appliances opening to a lounge area. The master bedroom boasts an ensuite and built-in wardrobe, there is a second double bedroom and a modern family bathroom. The apartment boasts underfloor heating throughout, with a high ceiling and large sash windows creating a light and airy feel throughout.

Beautifully decorated within and benefitting from an allocated parking space, this property is ideal for a small family. Available January 2025. Call Oakheart today for further information!

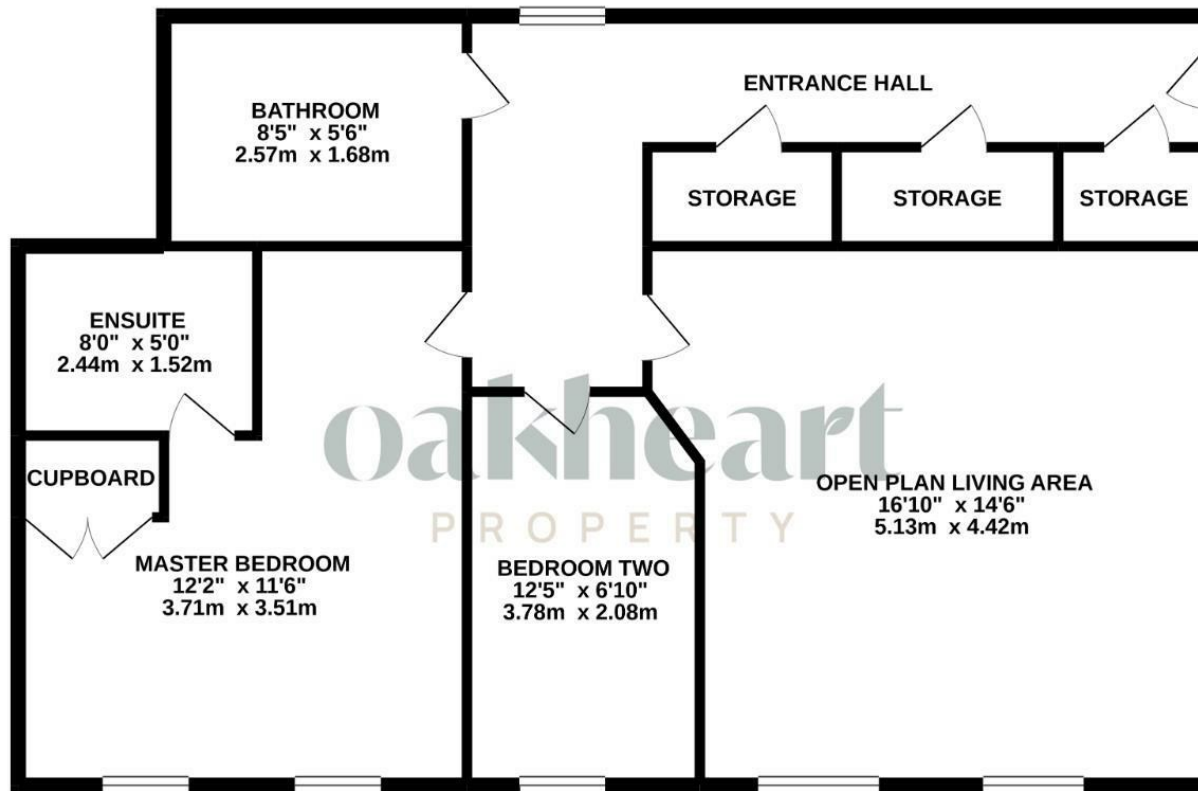








GROUND FLOOR



Whilst every attempt has been made to ensure the accuracy of the floorplan contained here, measurements of doors, windows, rooms and any other items are approximate and no responsibility is taken for any error, omission or mis-statement. This plan is for illustrative purposes only and should be used as such by any prospective purchaser. The services, systems and appliances shown have not been tested and no guarantee as to their operability or efficiency can be given.
Made with Metropix ©2021.

Local Authority:
Colchester Borough

Tenure:

Council Tax Band:
B

Energy Efficiency Rating

	Current	Potential
Very energy efficient - lower running costs		
(92 plus) A		
(81-91) B		
(69-80) C		
(55-68) D		
(39-54) E	42	42
(21-38) F		
(1-20) G		
Not energy efficient - higher running costs		
England & Wales	EU Directive 2002/91/EC	

Agents Note: Whilst every care has been taken to prepare these particulars, they are for guidance purposes only. All measurements are approximate and are for general guidance purposes only and whilst every care has been taken to ensure their accuracy, they should not be relied upon.

Oakheart Lettings

01206 803 303

propertymanagement@oakheartproperty.co.uk

2b Cotman Road, Colchester, Essex, CO3 4QJ

oakheart